

Mckenzie Ave between Quadra St and Saanich Rd

March 11, 2019 To March 15, 2019



The data presented here is for information purposes only and should not be considered authoritative for construction, geotechnical, engineering, navigational, legal, or other site-specific uses. The information shared is owned by the Transportation Division of the Engineering Department at the District of Saanich. Accuracy is not guaranteed.

Start Date: 11-Mar-19
 Start Time: 0:00
 Station ID: M0025-01

Location 1: Mckenzie Ave between Quadra St and Saanich Rd

Note: Quadra St and Saanich Rd

DATE:	March 11, 2019		March 12, 2019		March 13, 2019		March 14, 2019		March 15, 2019		WK AVG		WK AVG	HOURLY
	MON		TUE		WED		THURS		FRI		EB	WB	CH 1+2	%
Time:	EB	WB	EB	WB	EB	WB	EB	WB	EB	WB	EB	WB		
12-1 AM			54	62	74	70	50	64			59	65	125	0.5%
1-2 AM			24	43	26	42	23	36			24	40	65	0.2%
2-3 AM			25	24	23	29	29	26			26	26	52	0.2%
3-4 AM			21	15	27	17	23	22			24	18	42	0.2%
4-5 AM			70	37	73	36	76	40			73	38	111	0.4%
5-6 AM			123	103	133	102	135	100			130	102	232	0.9%
6-7 AM			404	325	401	307	426	310			410	314	724	2.7%
7-8 AM			856	647	877	681	863	685			865	671	1536	5.8%
8-9 AM			906	939	964	922	970	937			947	933	1879	7.1%
9-10 AM			963	720	925	730	937	756			942	735	1677	6.3%
10-11 AM			824	741	785	729	788	759			799	743	1542	5.8%
11-12 PM			873	826	795	797	836	890			835	838	1672	6.3%
12-1 PM			891	923	778	863	826	850			832	879	1710	6.4%
1-2 PM			730	926	789	915	816	951			778	931	1709	6.4%
2-3 PM			834	1037	820	954	830	1007			828	999	1827	6.9%
3-4 PM			935	1154	884	1159	984	1169			934	1161	2095	7.9%
4-5 PM			941	1145	886	1114	880	1203			902	1154	2056	7.7%
5-6 PM			882	1038	970	981	887	1030			913	1016	1929	7.3%
6-7 PM			688	914	711	925	686	878			695	906	1601	6.0%
7-8 PM			544	690	579	736	586	627			570	684	1254	4.7%
8-9 PM			508	570	483	544	533	563			508	559	1067	4.0%
9-10 PM			468	449	425	493	394	430			429	457	886	3.3%
10-11 PM			205	253	188	274	236	252			210	260	469	1.8%
11-12 AM			136	124	153	141	133	151			141	139	279	1.1%
LANES			12905	13705	12769	13561	12947	13736			12874	13667	26541	100.0%
TOTAL			26610		26330		26683				26550			
	MON		TUE		WED		THURS		FRI		WK AVG			

PEAK HOUR					TOTAL VEHICALS-PEAK PERIODS		2 HOUR PEAK INTERVALS						
MAX. 7 - 9 am PEAK HOUR	1879	⇒	7.1%	between 8-9 AM	10784	⇒	6 HR TOTAL	2 HR AM (7 - 9 AM)					
MAX. 7 - 11 am PEAK HOUR	1879	⇒	7.1%	between 8-9 AM	7401	⇒	4 HR TOTAL	VEH / HR	VEH / 2HR	2 HR %			
MAX. 11 am - 1 pm PEAK HOUR	1710	⇒	6.4%	between 12-1 PM				7-8 AM	1536	3416	12.9%		
MAX. 11 am - 3 pm PEAK HOUR	1827	⇒	6.9%	between 2-3 PM				8-9 AM	1879				
MAX. 4 - 6 pm PEAK HOUR	2056	⇒	7.7%	between 4-5 PM				2 HR NOON (11 - 1 PM)					
MAX. 3 - 6 pm PEAK HOUR	2095	⇒	7.9%	between 3-4 PM				VEH / HR	VEH / 2HR	2 HR %			
								11-12 PM	1672	3383	12.7%		
								12-1 PM	1710				
								2 HR PM (4 - 6 PM)					
								VEH / HR	VEH / 2HR	2 HR %			
								4-5 PM	2056	3986	15.0%		
								5-6 PM	1929				

Mckenzie Ave between Quadra St and Saanich Rd

Westbound

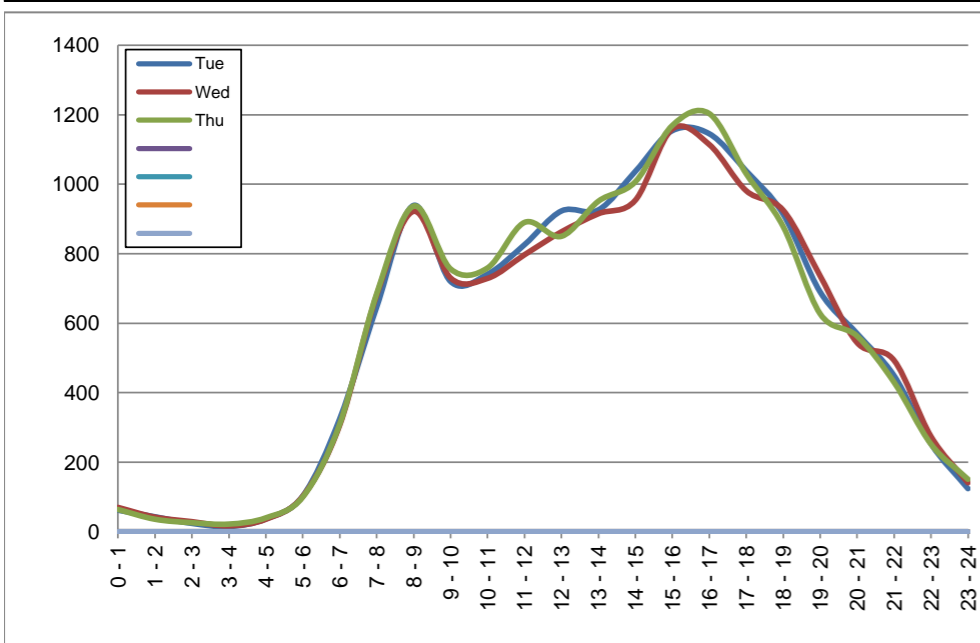
March 12, 2019 to March 14, 2019

Hourly Volumes

Time Period	Tue	Wed	Thu			
	Mar 12	Mar 13	Mar 14			
0 - 1	62	70	64			
1 - 2	43	42	36			
2 - 3	24	29	26			
3 - 4	15	17	22			
4 - 5	37	36	40			
5 - 6	103	102	100			
6 - 7	325	307	310			
7 - 8	647	681	685			
8 - 9	939	922	937			
9 - 10	720	730	756			
10 - 11	741	729	759			
11 - 12	826	797	890			
12 - 13	923	863	850			
13 - 14	926	915	951			
14 - 15	1037	954	1007			
15 - 16	1154	1159	1169			
16 - 17	1145	1114	1203			
17 - 18	1038	981	1030			
18 - 19	914	925	878			
19 - 20	690	736	627			
20 - 21	570	544	563			
21 - 22	449	493	430			
22 - 23	253	274	252			
23 - 24	124	141	151			
Day Total	13705	13561	13736			

15-Minute Volumes

Time Start	Tue	Wed	Thu				Time Start	Tue	Wed	Thu			
	Mar 12	Mar 13	Mar 14					Mar 12	Mar 13	Mar 14			
0:00	17	20	25				12:00	231	223	216			
0:15	20	18	13				12:15	233	226	219			
0:30	9	16	14				12:30	225	220	221			
0:45	16	16	12				12:45	234	194	194			
1:00	23	21	15				13:00	244	211	246			
1:15	8	5	5				13:15	227	213	251			
1:30	8	8	12				13:30	218	257	215			
1:45	4	8	4				13:45	237	234	239			
2:00	6	10	10				14:00	232	233	236			
2:15	6	5	3				14:15	244	204	217			
2:30	6	6	7				14:30	295	256	270			
2:45	6	8	6				14:45	266	261	284			
3:00	6	5	5				15:00	281	265	255			
3:15	3	2	5				15:15	316	291	301			
3:30	1	4	4				15:30	292	316	308			
3:45	5	6	8				15:45	265	287	305			
4:00	8	11	6				16:00	282	293	291			
4:15	8	10	9				16:15	290	282	310			
4:30	7	5	14				16:30	284	285	319			
4:45	14	10	11				16:45	289	254	283			
5:00	11	16	16				17:00	275	256	283			
5:15	18	24	21				17:15	245	250	246			
5:30	34	29	32				17:30	271	250	264			
5:45	40	33	31				17:45	247	225	237			
6:00	42	43	38				18:00	272	216	225			
6:15	57	56	63				18:15	206	256	247			
6:30	108	85	82				18:30	223	224	209			
6:45	118	123	127				18:45	213	229	197			
7:00	141	146	144				19:00	186	202	179			
7:15	136	139	151				19:15	155	186	174			
7:30	173	198	187				19:30	181	186	132			
7:45	197	198	203				19:45	168	162	142			
8:00	229	205	242				20:00	158	167	135			
8:15	286	263	261				20:15	134	142	164			
8:30	219	228	219				20:30	156	119	124			
8:45	205	226	215				20:45	122	116	140			
9:00	179	200	198				21:00	127	122	127			
9:15	183	177	178				21:15	113	137	111			
9:30	173	190	190				21:30	107	124	99			
9:45	185	163	190				21:45	102	110	93			
10:00	194	182	190				22:00	86	95	73			
10:15	204	189	184				22:15	60	73	76			
10:30	164	175	196				22:30	60	54	62			
10:45	179	183	189				22:45	47	52	41			
11:00	197	193	212				23:00	37	52	56			
11:15	196	177	203				23:15	40	33	36			
11:30	228	215	236				23:30	26	28	33			
11:45	205	212	239				23:45	21	28	26			



Site notes:

Mckenzie Ave between Quadra St and Saanich Rd

Eastbound

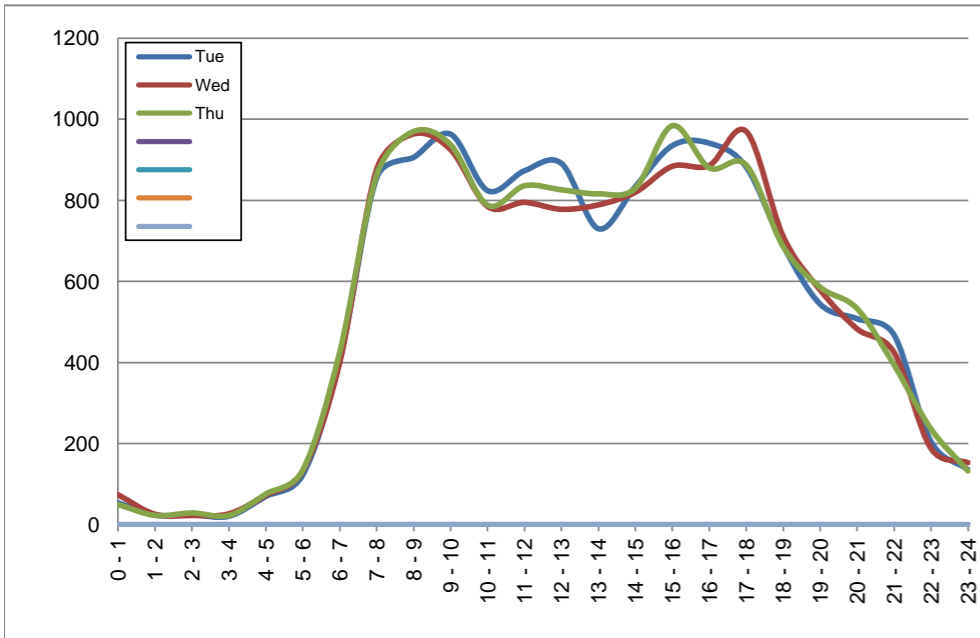
March 12, 2019 to March 14, 2019

Hourly Volumes

Time Period	Tue	Wed	Thu			
	Mar 12	Mar 13	Mar 14			
0 - 1	54	74	50			
1 - 2	24	26	23			
2 - 3	25	23	29			
3 - 4	21	27	23			
4 - 5	70	73	76			
5 - 6	123	133	135			
6 - 7	404	401	426			
7 - 8	856	877	863			
8 - 9	906	964	970			
9 - 10	963	925	937			
10 - 11	824	785	788			
11 - 12	873	795	836			
12 - 13	891	778	826			
13 - 14	730	789	816			
14 - 15	834	820	830			
15 - 16	935	884	984			
16 - 17	941	886	880			
17 - 18	882	970	887			
18 - 19	688	711	686			
19 - 20	544	579	586			
20 - 21	508	483	533			
21 - 22	468	425	394			
22 - 23	205	188	236			
23 - 24	136	153	133			
Day Total	12905	12769	12947			

15-Minute Volumes

Time Start	Tue	Wed	Thu				Time Start	Tue	Wed	Thu			
	Mar 12	Mar 13	Mar 14					Mar 12	Mar 13	Mar 14			
0:00	19	25	16				12:00	241	192	206			
0:15	5	13	12				12:15	231	211	192			
0:30	16	16	13				12:30	210	199	201			
0:45	14	20	9				12:45	209	176	227			
1:00	5	11	3				13:00	196	210	213			
1:15	5	4	9				13:15	184	202	204			
1:30	7	8	3				13:30	172	187	189			
1:45	7	3	8				13:45	178	190	210			
2:00	10	6	10				14:00	201	185	217			
2:15	3	6	9				14:15	222	196	217			
2:30	5	7	5				14:30	193	226	179			
2:45	7	4	5				14:45	218	213	217			
3:00	5	6	5				15:00	232	243	248			
3:15	2	5	2				15:15	224	216	251			
3:30	8	7	5				15:30	229	192	243			
3:45	6	9	11				15:45	250	233	242			
4:00	14	10	14				16:00	224	226	205			
4:15	13	15	13				16:15	236	230	214			
4:30	19	19	19				16:30	247	225	241			
4:45	24	29	30				16:45	234	205	220			
5:00	20	15	16				17:00	224	227	216			
5:15	19	24	26				17:15	228	253	234			
5:30	35	42	28				17:30	240	250	209			
5:45	49	52	65				17:45	190	240	228			
6:00	47	47	52				18:00	179	176	179			
6:15	96	115	101				18:15	185	194	176			
6:30	120	113	126				18:30	142	163	156			
6:45	141	126	147				18:45	182	178	175			
7:00	181	141	174				19:00	163	166	160			
7:15	179	217	177				19:15	131	138	145			
7:30	250	240	230				19:30	118	120	117			
7:45	246	279	282				19:45	132	155	164			
8:00	231	262	272				20:00	129	119	113			
8:15	198	194	224				20:15	136	157	168			
8:30	238	231	252				20:30	131	99	119			
8:45	239	277	222				20:45	112	108	133			
9:00	262	248	222				21:00	133	134	108			
9:15	221	225	240				21:15	132	105	105			
9:30	233	208	233				21:30	127	88	79			
9:45	247	244	242				21:45	76	98	102			
10:00	227	213	169				22:00	67	63	73			
10:15	175	191	187				22:15	54	57	46			
10:30	190	201	226				22:30	44	39	61			
10:45	232	180	206				22:45	40	29	56			
11:00	195	205	220				23:00	37	46	52			
11:15	232	215	220				23:15	32	49	31			
11:30	219	193	206				23:30	38	35	27			
11:45	227	182	190				23:45	29	23	23			



Site notes:

Vehicle Speed Summary

Saanich Engineering Department

Count Id: [M0025-01](#)

Filename: [Mckenzie Ave between Quadra St and Saanich Rd-Mar-2019.xlsm](#)

Location: Mckenzie Ave between Quadra St and Saanich Rd

Note: Quadra St and Saanich Rd

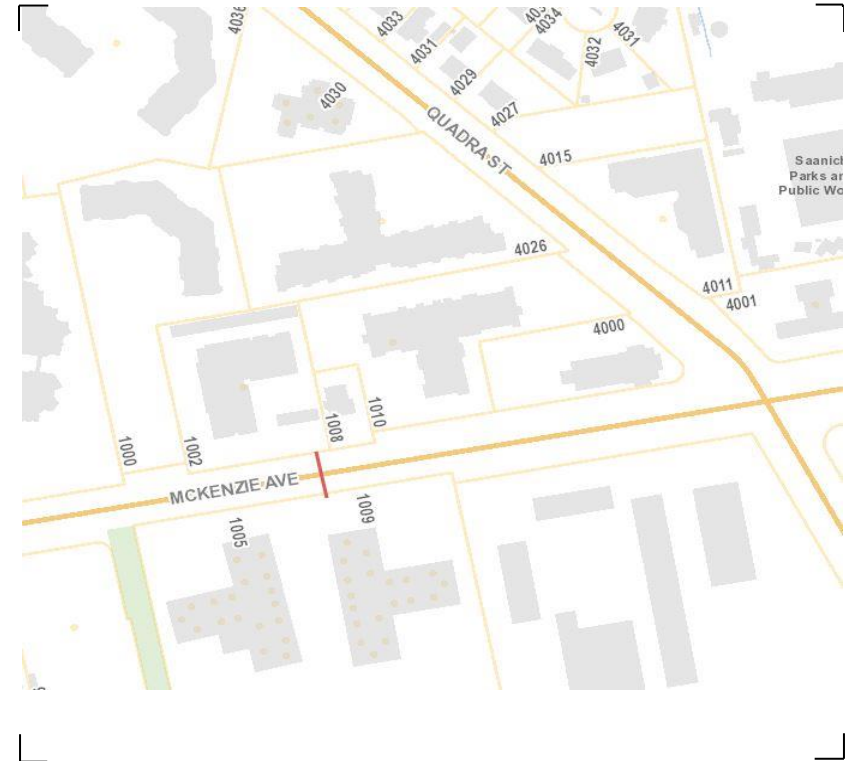
Direction: **East-West**

Dates: **March 11, 2019 To March 15, 2019**

Filtered data

AVG. SPEED	28 mph	45 km/h
50 % SPEED	28 mph	44 km/h
85 % SPEED	33 mph	53 km/h
95 % SPEED	37 mph	59 km/h

Location Map



Mckenzie Ave between Quadra St and Saanich Rd

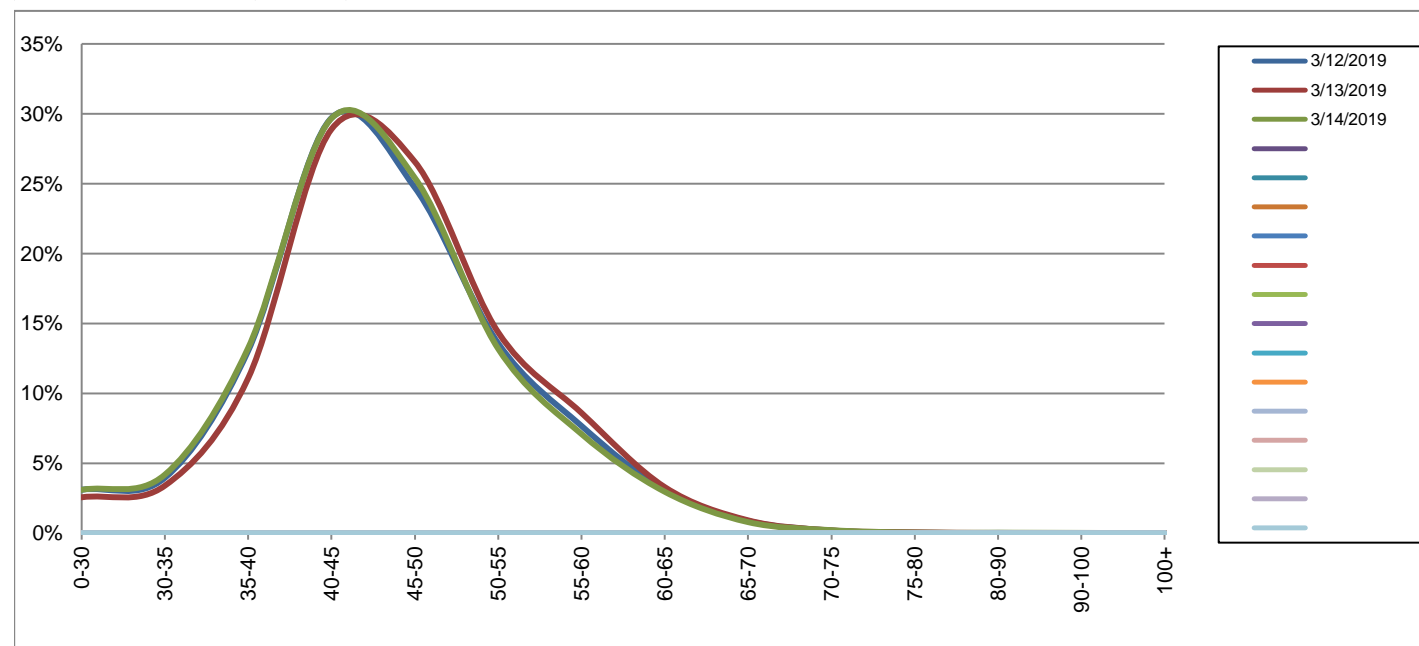
Westbound

March 12, 2019 to March 14, 2019

Daily Speed Bin Percentages															Daily Speed Bin Volumes														Total	Avg.
Bin #	1	2	3	4	5	6	7	8	9	10	11	12	13	14	1	2	3	4	5	6	7	8	9	10	11	12	13	14	Volume	Speed
Bin Speeds	0-30	30-35	35-40	40-45	45-50	50-55	55-60	60-65	65-70	70-75	75-80	80-90	90-100	100+	0-30	30-35	35-40	40-45	45-50	50-55	55-60	60-65	65-70	70-75	75-80	80-90	90-100	100+		
3/12/2019	3.1%	4.0%	13.0%	29.7%	24.7%	13.6%	7.7%	3.1%	0.9%	0.2%	0.0%	0.0%	0.0%	0.0%	426	543	1788	4071	3388	1862	1052	422	120	26	4	3	0	0	13705	45
3/13/2019	2.6%	3.4%	11.1%	28.9%	26.6%	14.4%	8.6%	3.3%	0.9%	0.2%	0.1%	0.0%	0.0%	0.0%	348	461	1504	3919	3603	1949	1167	447	125	27	9	2	0	0	13561	46
3/14/2019	3.1%	4.2%	13.2%	29.7%	25.4%	13.2%	7.1%	3.0%	0.8%	0.2%	0.0%	0.0%	0.0%	0.0%	426	575	1820	4076	3491	1813	975	407	109	30	6	5	3	0	13736	45
Total	2.9%	3.9%	12.5%	29.4%	25.6%	13.7%	7.8%	3.1%	0.9%	0.2%	0.0%	0.0%	0.0%	0.0%	1200	1579	5112	12066	10482	5624	3194	1276	354	83	19	10	3	0	41002	45

Speed Data Summary

Bin #	1	2	3	4	5	6	7	8	9	10	11	12	13	14	Total
Bin Speeds	0-30	30-35	35-40	40-45	45-50	50-55	55-60	60-65	65-70	70-75	75-80	80-90	90-100	100+	
Survey Total	1200	1579	5112	12066	10482	5624	3194	1276	354	83	19	10	3	0	41002
% Total	2.9%	3.9%	12.5%	29.4%	25.6%	13.7%	7.8%	3.1%	0.9%	0.2%	0.0%	0.0%	0.0%	0.0%	100%
Accumulated %	2.9%	6.8%	19.2%	48.7%	74.2%	88.0%	95.7%	98.9%	99.7%	99.9%	100.0%	100.0%	100.0%	100%	
Inverse Accum. %	97.1%	93.2%	80.8%	51.3%	25.8%	12.0%	4.3%	1.1%	0.3%	0.1%	0.0%	0.0%	0.0%	0.0%	
Average Speed	45 KM/H														



Site notes:

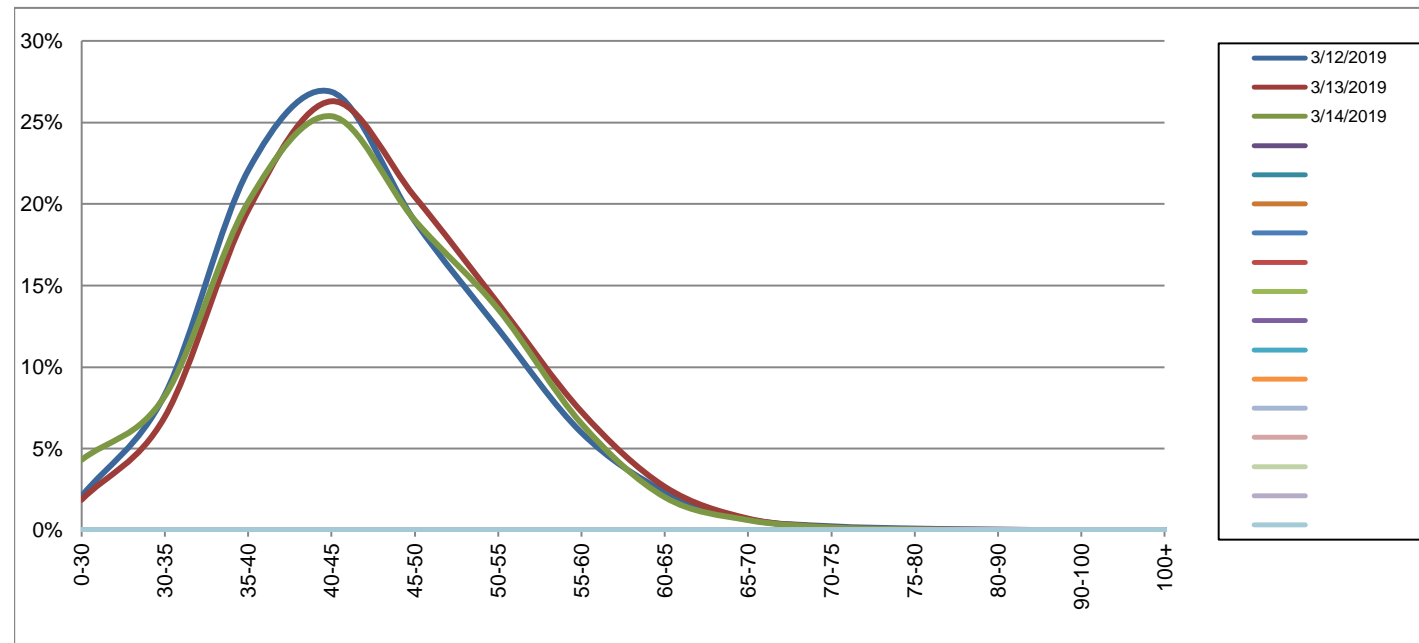
Mckenzie Ave between Quadra St and Saanich Rd

Eastbound
March 12, 2019 to March 14, 2019

Daily Speed Bin Percentages															Daily Speed Bin Volumes														Total	Avg.
Bin #	1	2	3	4	5	6	7	8	9	10	11	12	13	14	1	2	3	4	5	6	7	8	9	10	11	12	13	14	Volume	Speed
Bin Speeds	0-30	30-35	35-40	40-45	45-50	50-55	55-60	60-65	65-70	70-75	75-80	80-90	90-100	100+	0-30	30-35	35-40	40-45	45-50	50-55	55-60	60-65	65-70	70-75	75-80	80-90	90-100	100+		
3/12/2019	2.1%	8.3%	22.1%	26.9%	18.9%	12.3%	6.0%	2.4%	0.7%	0.2%	0.1%	0.0%	0.0%	0.0%	268	1073	2847	3468	2445	1593	772	305	86	31	13	4	0	0	12905	44
3/13/2019	1.9%	7.0%	19.6%	26.3%	20.4%	13.9%	7.3%	2.7%	0.7%	0.2%	0.1%	0.0%	0.0%	0.0%	238	888	2505	3358	2610	1775	928	340	91	24	8	4	0	0	12769	45
3/14/2019	4.3%	8.2%	20.1%	25.4%	19.0%	13.6%	6.5%	2.0%	0.6%	0.2%	0.1%	0.0%	0.0%	0.0%	558	1065	2605	3286	2460	1755	846	262	80	22	7	1	0	0	12947	43
Total	2.8%	7.8%	20.6%	26.2%	19.5%	13.3%	6.6%	2.3%	0.7%	0.2%	0.1%	0.0%	0.0%	0.0%	1064	3026	7957	10112	7515	5123	2546	907	257	77	28	9	0	0	38621	44

Speed Data Summary

Bin #	1	2	3	4	5	6	7	8	9	10	11	12	13	14	Total
Bin Speeds	0-30	30-35	35-40	40-45	45-50	50-55	55-60	60-65	65-70	70-75	75-80	80-90	90-100	100+	
Survey Total	1064	3026	7957	10112	7515	5123	2546	907	257	77	28	9	0	0	38621
% Total	2.8%	7.8%	20.6%	26.2%	19.5%	13.3%	6.6%	2.3%	0.7%	0.2%	0.1%	0.0%	0.0%	0.0%	100%
Accumulated %	2.8%	10.6%	31.2%	57.4%	76.8%	90.1%	96.7%	99.0%	99.7%	99.9%	100.0%	100.0%	100.0%	100%	
Inverse Accum. %	97.2%	89.4%	68.8%	42.6%	23.2%	9.9%	3.3%	1.0%	0.3%	0.1%	0.0%	0.0%	0.0%	0.0%	
Average Speed	44 KM/H														



Site notes:

Mckenzie Ave between Quadra St and Saanich Rd

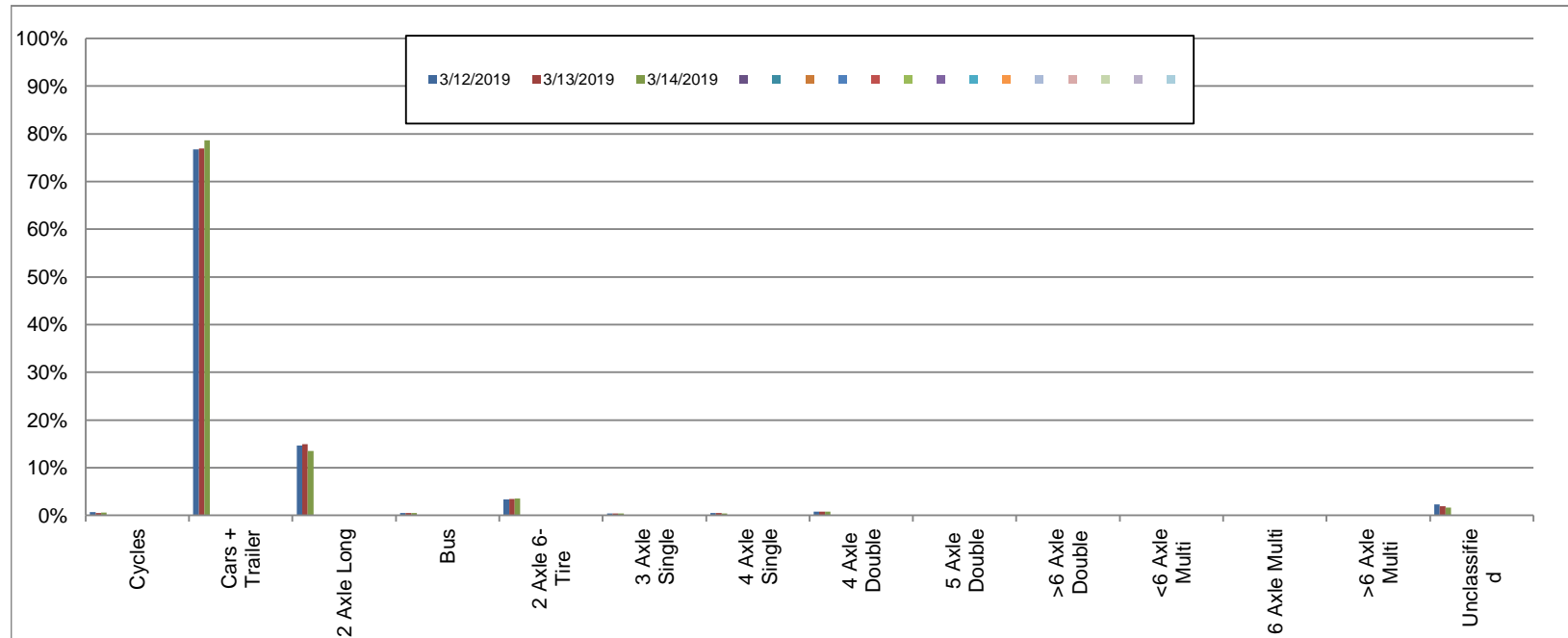
Westbound

March 12, 2019 to March 14, 2019

Daily Class Bin Percentages															Daily Class Bin Volumes										Total Volume				
Bin #	1	2	3	4	5	6	7	8	9	10	11	12	13	14	1	2	3	4	5	6	7	8	9	10		11	12	13	14
Bin Class	Cycles	Cars + Trailer	2 Axle Long	Bus	2 Axle 6-Tire	3 Axle Single	4 Axle Single	4 Axle Double	5 Axle Double	>6 Axle Double	<6 Axle Multi	6 Axle Multi	>6 Axle Multi	Unclassified	Cycles	Cars + Trailer	2 Axle Long	Bus	2 Axle 6-Tire	3 Axle Single	4 Axle Single	4 Axle Double	5 Axle Double	>6 Axle Double	<6 Axle Multi	6 Axle Multi	>6 Axle Multi	Unclassified	
3/12/2019	0.7%	76.8%	14.7%	0.5%	3.4%	0.4%	0.5%	0.7%	0.1%	0.0%	0.0%	0.0%	0.0%	2.3%	90	10522	2012	62	460	50	64	102	14	6	0	1	2	320	13705
3/13/2019	0.5%	77.0%	14.9%	0.5%	3.4%	0.4%	0.5%	0.7%	0.1%	0.0%	0.0%	0.0%	0.0%	1.9%	67	10438	2025	64	460	60	63	100	8	5	1	2	4	264	13561
3/14/2019	0.6%	78.6%	13.5%	0.5%	3.5%	0.4%	0.4%	0.7%	0.1%	0.1%	0.0%	0.0%	0.0%	1.6%	85	10802	1848	71	480	60	51	102	10	7	0	0	2	218	13736
Total	0.6%	77.5%	14.4%	0.5%	3.4%	0.4%	0.4%	0.7%	0.1%	0.0%	0.0%	0.0%	0.0%	2.0%	242	31762	5885	197	1400	170	178	304	32	18	1	3	8	802	41002

Class Data Summary

Bin #	1	2	3	4	5	6	7	8	9	10	11	12	13	14	Total Volume
Bin Class	Cycles	Cars + Trailer	2 Axle Long	Bus	2 Axle 6-Tire	3 Axle Single	4 Axle Single	4 Axle Double	5 Axle Double	>6 Axle Double	<6 Axle Multi	6 Axle Multi	>6 Axle Multi	Unclassified	Total Volume
Survey Total	242	31762	5885	197	1400	170	178	304	32	18	1	3	8	802	41002
% Total	0.6%	77.5%	14.4%	0.5%	3.4%	0.4%	0.4%	0.7%	0.1%	0.0%	0.0%	0.0%	0.0%	2.0%	100%
Accumulated %	0.6%	78.1%	92.4%	92.9%	96.3%	96.7%	97.2%	97.9%	98.0%	98.0%	98.0%	98.0%	98.0%	100.0%	
Inv. Accum. %	99.4%	21.9%	7.6%	7.1%	3.7%	3.3%	2.8%	2.1%	2.0%	2.0%	2.0%	2.0%	2.0%	0.0%	



Classification Descriptions

Bin #	Bin Description
1	Motorcycles
2	Passenger cars, including those with recreational trailers
3	2-axle pick-ups, vans, and RVs, including those with recreational trailers
4	Buses
5	2-axle, 6-tire single units
6	3-axle single units
7	4-axle single units
8	3-axle or 4-axle double unit
9	5-axle double unit
10	6-, 7-, or 8-axle double unit
11	5-axle multiple unit
12	6-axle multiple unit
13	7-or-more-axle multiple unit
14	Vehicles that could not be classified

Site notes:

Mckenzie Ave between Quadra St and Saanich Rd

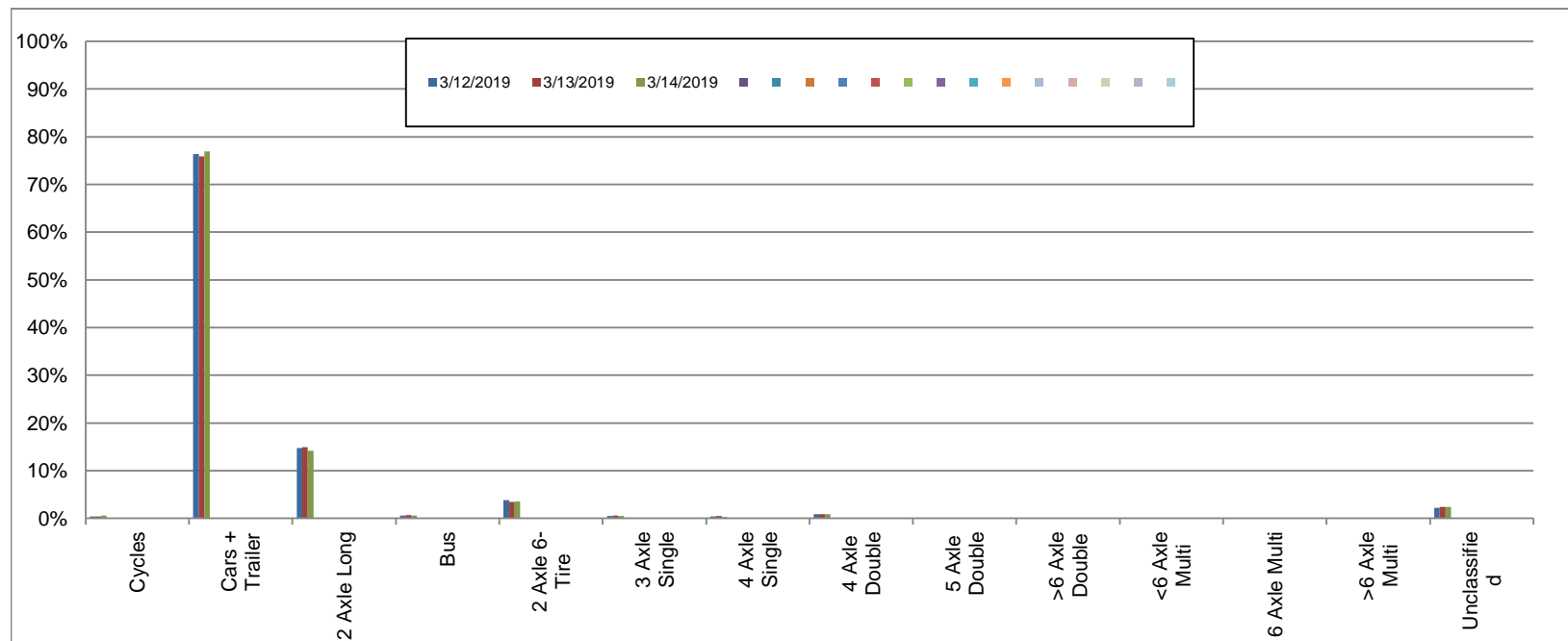
Eastbound

March 12, 2019 to March 14, 2019

Daily Class Bin Percentages															Daily Class Bin Volumes														
Bin #	1	2	3	4	5	6	7	8	9	10	11	12	13	14	1	2	3	4	5	6	7	8	9	10	11	12	13	14	Total Volume
Bin Class	Cycles	Cars + Trailer	2 Axle Long	Bus	2 Axle 6-Tire	3 Axle Single	4 Axle Single	4 Axle Double	5 Axle Double	>6 Axle Double	<6 Axle Multi	6 Axle Multi	>6 Axle Multi	Unclassified	Cycles	Cars + Trailer	2 Axle Long	Bus	2 Axle 6-Tire	3 Axle Single	4 Axle Single	4 Axle Double	5 Axle Double	>6 Axle Double	<6 Axle Multi	6 Axle Multi	>6 Axle Multi	Unclassified	
3/12/2019	0.4%	76.3%	14.7%	0.5%	3.8%	0.5%	0.4%	0.9%	0.1%	0.0%	0.0%	0.0%	0.0%	2.2%	53	9850	1903	70	489	67	50	115	17	3	1	0	4	283	12905
3/13/2019	0.4%	75.9%	15.0%	0.6%	3.5%	0.6%	0.5%	0.9%	0.1%	0.0%	0.0%	0.0%	0.1%	2.4%	52	9695	1910	82	442	72	68	112	14	5	2	0	7	308	12769
3/14/2019	0.6%	76.9%	14.2%	0.6%	3.6%	0.5%	0.3%	0.9%	0.1%	0.0%	0.0%	0.0%	0.0%	2.3%	81	9955	1834	72	463	62	43	112	13	6	1	0	1	304	12947
Total	0.5%	76.4%	14.6%	0.6%	3.6%	0.5%	0.4%	0.9%	0.1%	0.0%	0.0%	0.0%	0.0%	2.3%	186	29500	5647	224	1394	201	161	339	44	14	4	0	12	895	38621

Class Data Summary

Bin #	1	2	3	4	5	6	7	8	9	10	11	12	13	14	Total Volume
Bin Class	Cycles	Cars + Trailer	2 Axle Long	Bus	2 Axle 6-Tire	3 Axle Single	4 Axle Single	4 Axle Double	5 Axle Double	>6 Axle Double	<6 Axle Multi	6 Axle Multi	>6 Axle Multi	Unclassified	Total Volume
Survey Total	186	29500	5647	224	1394	201	161	339	44	14	4	0	12	895	38621
% Total	0.5%	76.4%	14.6%	0.6%	3.6%	0.5%	0.4%	0.9%	0.1%	0.0%	0.0%	0.0%	0.0%	2.3%	100%
Accumulated %	0.5%	76.9%	91.5%	92.1%	95.7%	96.2%	96.6%	97.5%	97.6%	97.6%	97.7%	97.7%	97.7%	100.0%	
Inv. Accum. %	99.5%	23.1%	8.5%	7.9%	4.3%	3.8%	3.4%	2.5%	2.4%	2.4%	2.3%	2.3%	2.3%	0.0%	



Classification Descriptions

Bin #	Bin Description
1	Motorcycles
2	Passenger cars, including those with recreational trailers
3	2-axle pick-ups, vans, and RVs, including those with recreational trailers
4	Buses
5	2-axle, 6-tire single units
6	3-axle single units
7	4-axle single units
8	3-axle or 4-axle double unit
9	5-axle double unit
10	6-, 7-, or 8-axle double unit
11	5-axle multiple unit
12	6-axle multiple unit
13	7-or-more-axle multiple unit
14	Vehicles that could not be classified

Site notes: